



**NATIONAL KIDNEY REGISTRY**<sup>®</sup>  
FACILITATING LIVING DONOR TRANSPLANTS

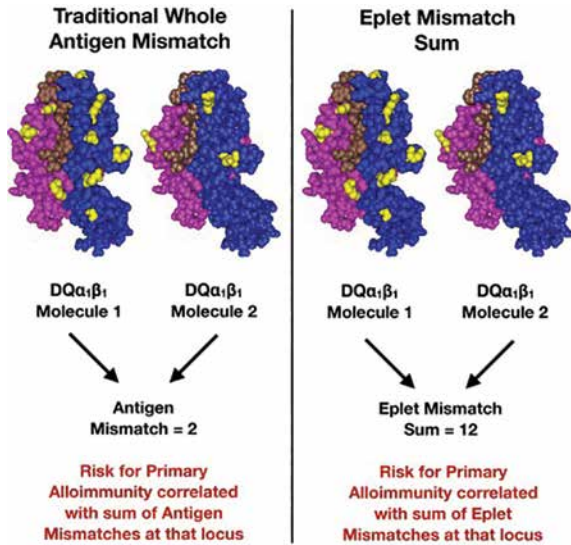


**BETTER MATCHES**  
**BETTER OUTCOMES**

[www.kidneyregistry.org](http://www.kidneyregistry.org)

# Precise Technology to Find You the Best Match

Traditionally, transplant matches were measured by an HLA match score from 0-6 (6 being the best). HLA scores are generally based on A, B and DR antigens. An antigen mismatch is where rejection often starts.

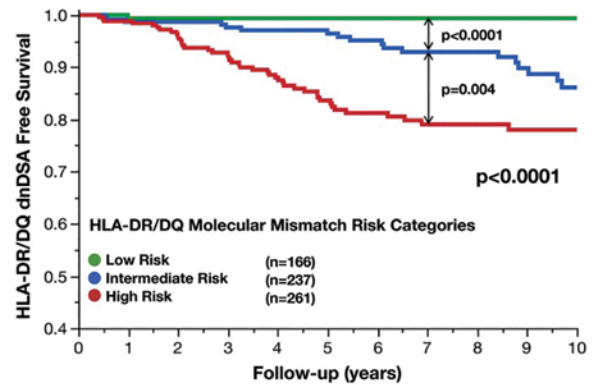


Wiebe C, Kosmoliaptsis V, Pochinco D, et al. HLA-DR/DQ molecular mismatch: A prognostic biomarker for primary alloimmunity. *Am J Transplant.* 2019;19:1708–1719.

Behind antigens are eplets, which are essential components of HLA epitopes recognized by antibodies. Eplet mismatch analysis has been proven to be a more precise measure of a donor-recipient match compared to antigen matching.

By minimizing eplet mismatches and understanding the match they receive, a recipient can potentially:

- a) reduce the risk of de novo DSA formation
- b) lower the probability of rejection
- c) lower the probability of graft failure
- d) lower their immune-suppression dosage



Wiebe C, Kosmoliaptsis V, Pochinco D, et al. HLA-DR/DQ molecular mismatch: A prognostic biomarker for primary alloimmunity. *Am J Transplant.* 2019;19:1708–1719.

The lower the eplet mismatch, the higher the probability the transplanted kidney will last a lifetime.

## Past the HLA Mark Down to the Eplet Level



## Donor Advantages

### 1. Donor Shield

- a. Lost wage reimbursement
- b. Travel & lodging reimbursement
- c. Life insurance
- d. Disability insurance
- e. Legal support
- f. Coverage for uncovered complications
- g. Travel and lost wage reimbursement related to post-surgical complications

### 2. Voucher Program:

- a) **Standard Voucher:** Allows a donor to donate their kidney when it is convenient for them while providing a voucher to a friend or family member in immediate need of a transplant.
- b) **Family Voucher:** Allows a donor to donate their kidney to someone in need while providing vouchers for up to 5 healthy family members, should one of them ever need a kidney transplant in the future.

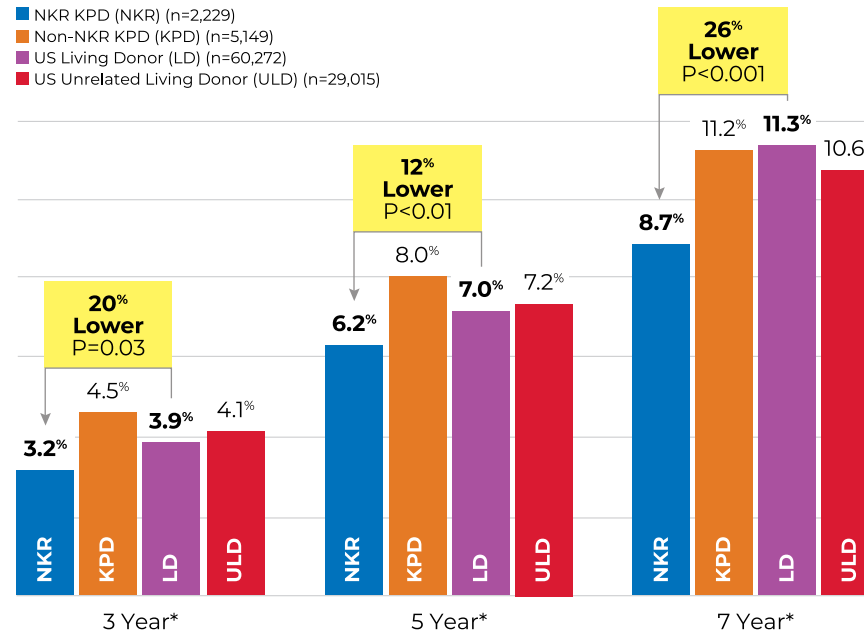
### 3. Remote Donation Program:

Allows a donor to donate to someone in a distant city without requiring the donor to travel to the far away transplant center. The donor donates close to home and the kidney is safely transported to the recipient's transplant center in the distant city.

- 4. All kidney donors receive prioritization for a living donor kidney in the unlikely event they ever need a transplant in the future.

# BETTER Technology + BETTER Matches = Better Outcomes & Less Immunosuppression

## Death-Censored Graft Failure Rates



\*Statistically Significant

Provided courtesy of Johns Hopkins University School of Medicine, Department of Surgery  
 \*Not including CHIP patients; Kaplan-Meier GS Rates for Transplants Performed: 02/2008-12/2018 with follow-up through 6/30/2019  
<https://www.srtr.org> SRTR data as of September 2019



## Recipient Advantages

1. We can help you find a better-matched living donor kidney.
2. Statistically significant lower death-censored graft failure rates at 3, 5 and 7 years post-transplant.
3. Donor Shield removes barriers to donation, making it easier to find a living donor.
4. Standard Voucher Program allows donors to donate quickly, when it is convenient for their schedule.
5. Microsite Program – a free website to help patients find a living donor.
6. Shorter wait time – 80% are transplanted within 90 days of activation in the NKR system.
7. Consistently match and transplant the most highly sensitized patients.

## State-of-the-Art Technology Achieving Longer Kidney Life Years



**WHO WE ARE:** The National Kidney Registry is the world's largest paired exchange organization, facilitating more living donor kidney transplants than any other organization in the world, and is the leading provider of comprehensive protections for living donors.

**HOW IT WORKS:** In a paired exchange chain, a donor will donate their kidney to another recipient in exchange for a compatible, or better matched, kidney for their loved one with a voucher donor as the catalyst.

