

Paired Exchange Results Quarterly Report

As of March 31, 2012

Table of Contents

Message From the Founder	3
Website Visits Per Month	4
NKR Patient Referrals Per Month	4
New Pair Registrations Per Month	5
Transplants Facilitated by Year	5
2011 Transplants by Wait Time	6
Number of Transplanted Patients with cPRA >80%	6
Transplanted Patient Average Wait Time	7
Enrolled Patient Average Wait Time	7
Cumulative Pool Distribution by Status.....	8
Percent of Patients Transplanted in < 6 Months	8
Transplanted Patients by Year by cPRA	9
Average cPRA of Transplanted Patients by Year	9
Transplants by cPRA	10
Pool Composition by cPRA	10
Chain Lengths	11
Summary of Broken Chains	11
Broken Chains by Year - Summary	12
Broken Chains by Year - Detail	12
NKR Program Statistics	13
Medical Board	14



Message From the Founder

2012 is off to a great start with the successful completion of 45 exchange transplants during the first quarter. This brings us to 434 transplants since we started organizing swaps 4 years ago.

Our transplanted patient average wait time is 6 months with 71% of transplanted patients waiting less than 6 months to get matched and transplanted. We continue to find an increasing number of matches for highly sensitized patients. During the first quarter, 10 patients with cPRAs greater than 80% were matched and transplanted, 6 of which had cPRAs greater than 95%. Even with this success, we are investing aggressively to develop better ways to match and transplant the 100% PRA patients, which make up nearly half of our unmatched pool.

The extensive media coverage of our recent 30 way swap tripled our website traffic, generating 549 patient referrals for our Member Centers and over 500 online NDD registrations during the quarter. This media coverage is a blessing for many ESRD patients who are leaving transplant centers that do not provide adequate paired exchange services and are getting matched and transplanted at our Member Centers.

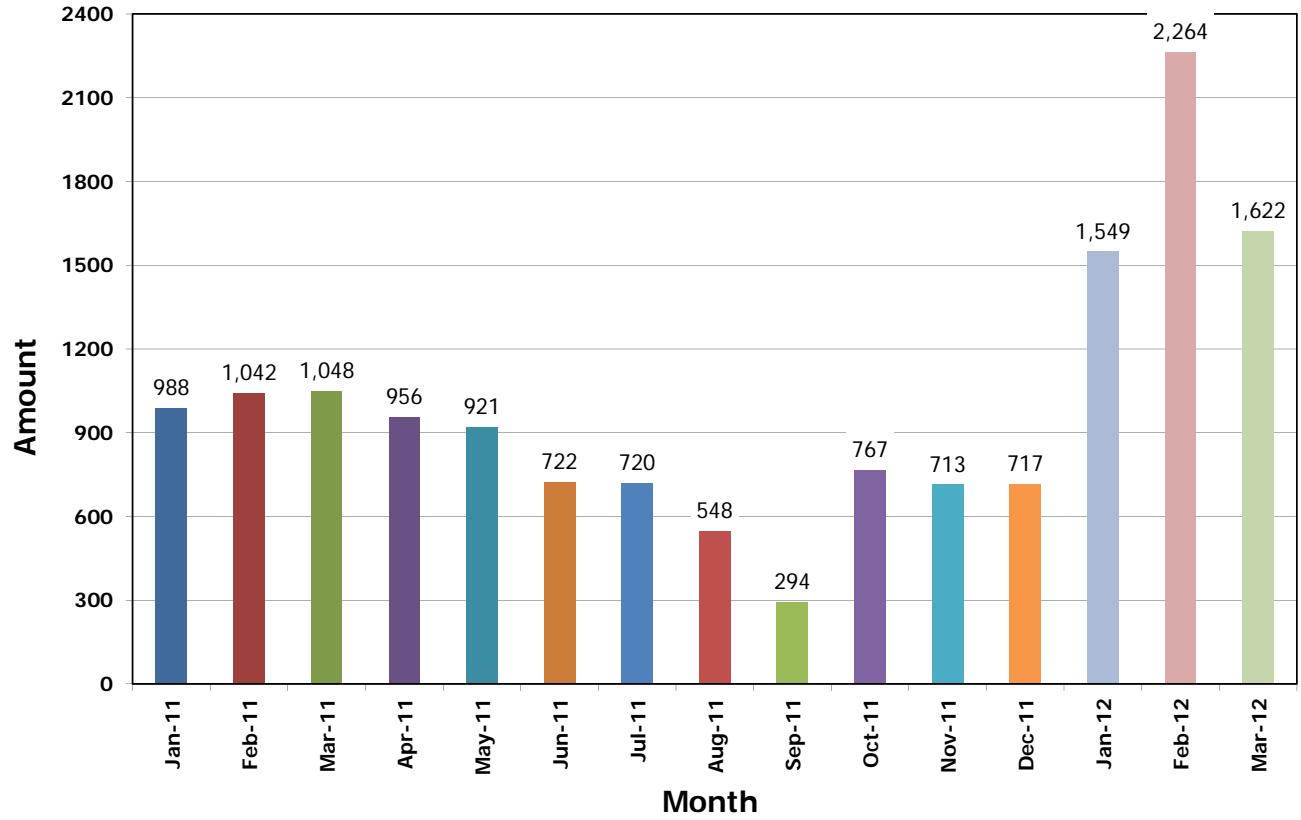
None of this success would be possible without the effort and dedication of the medical professionals at our Member Centers. Thank you - and keep up the great work.

Sincerely

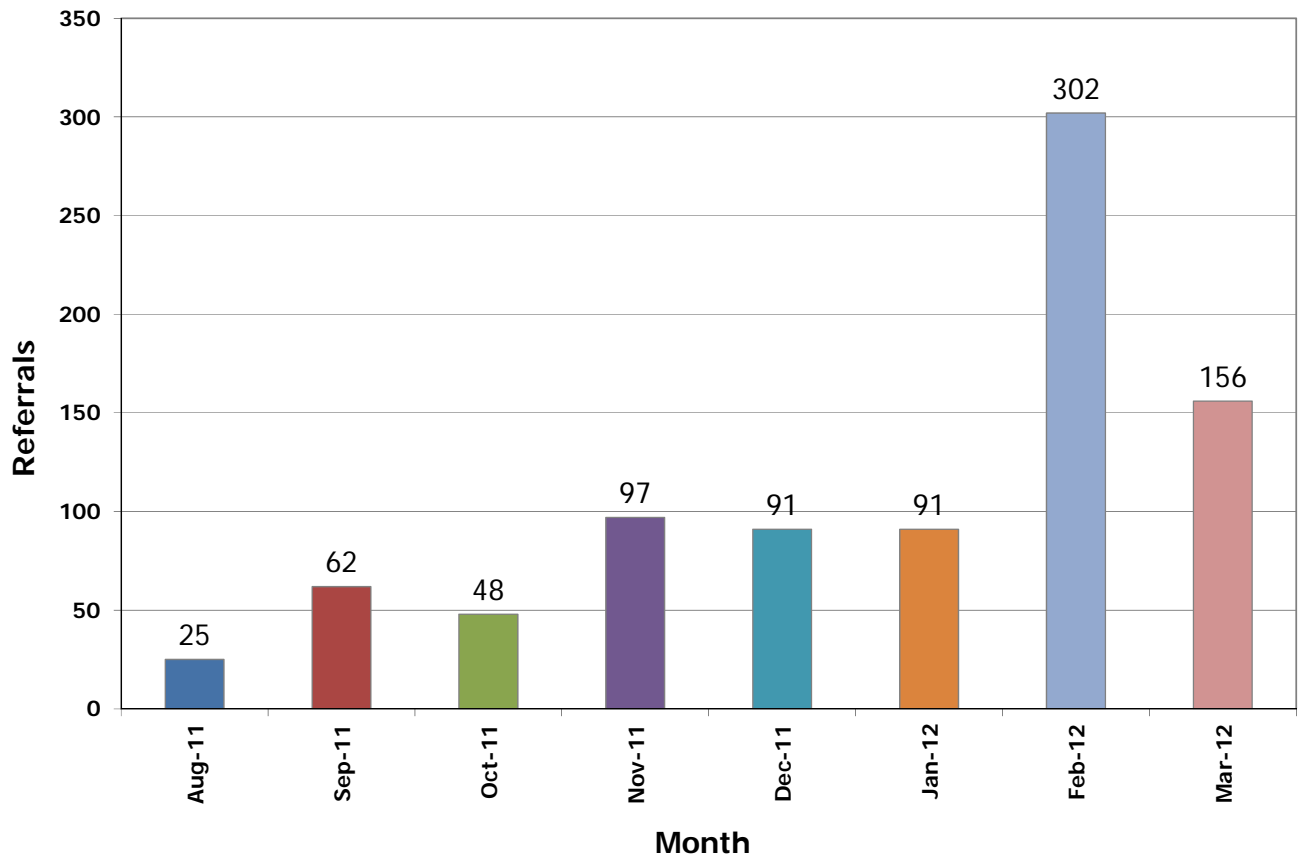
A handwritten signature in blue ink, appearing to read 'G Hil', written over a light blue horizontal line.

Garet Hil
Founder & President
National Kidney Registry

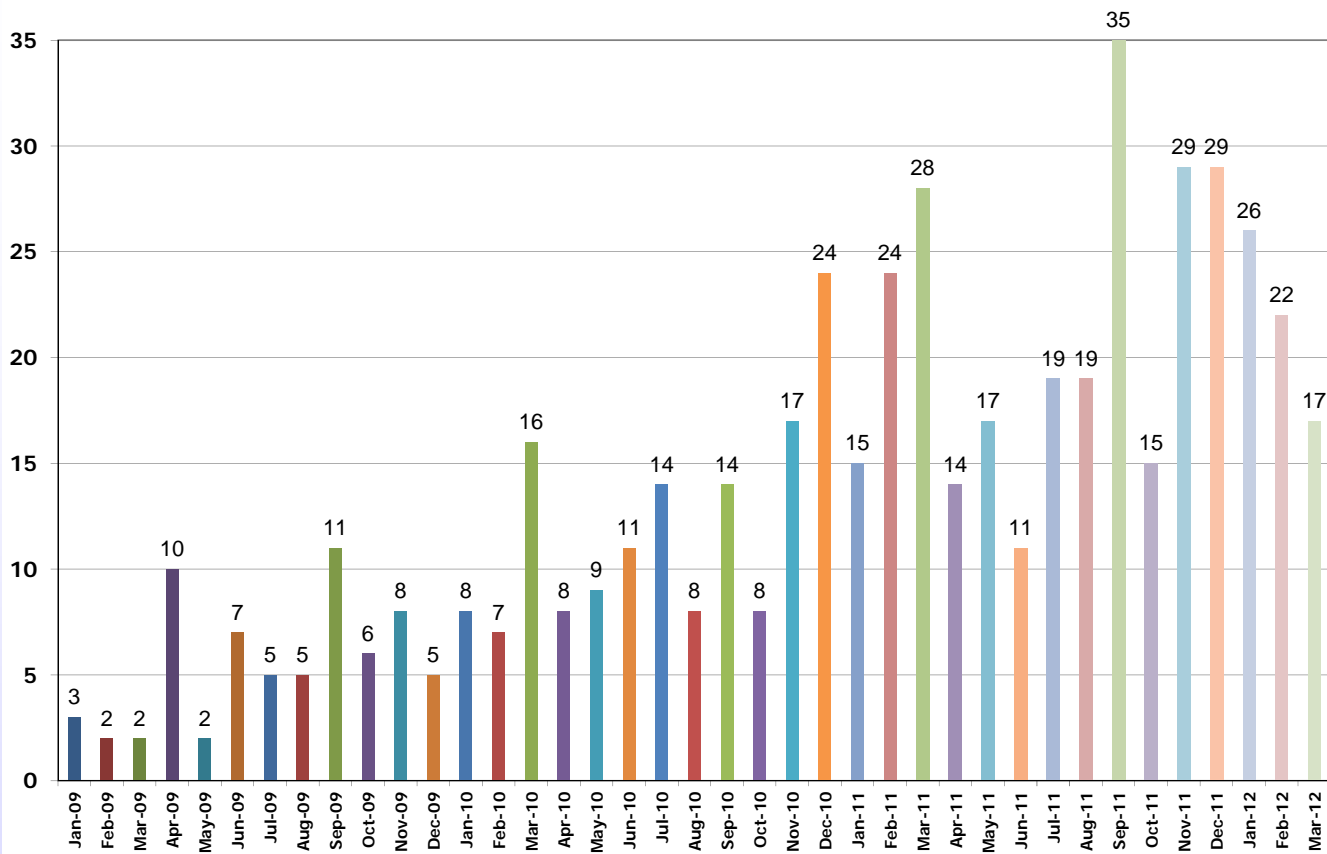
Website Visits Per Month



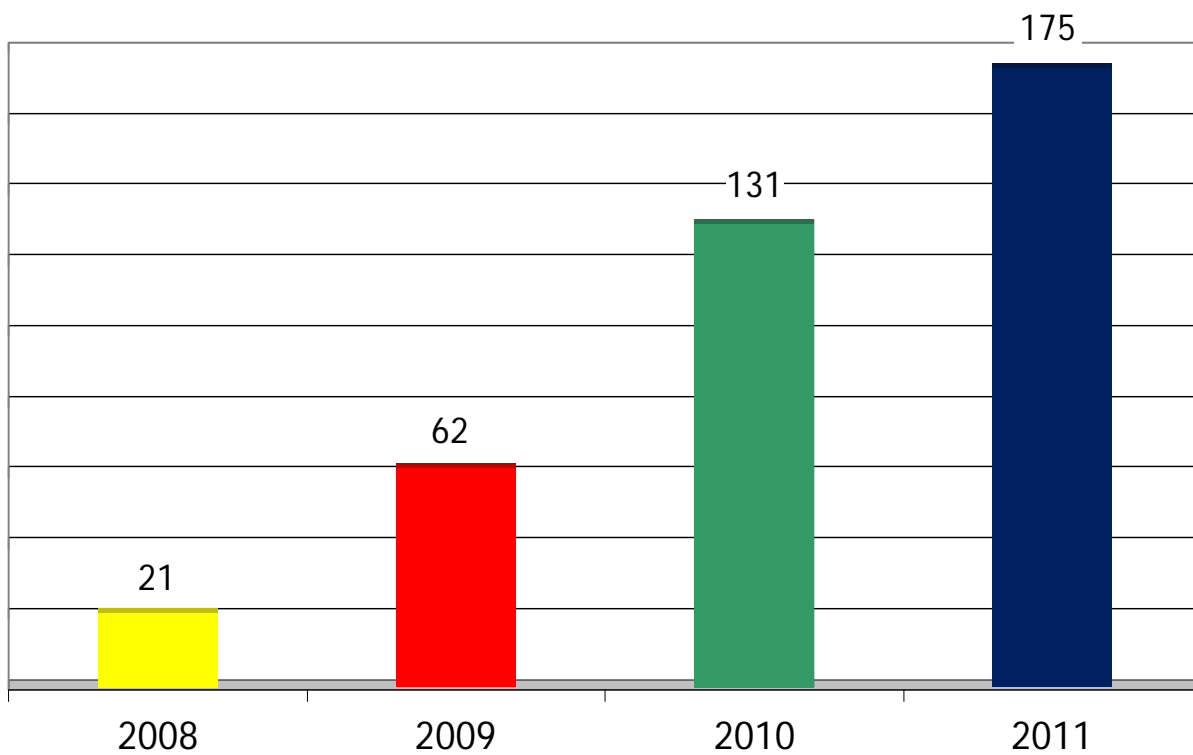
NKR Patient Referrals Per Month



New Pair Registrations Per Month

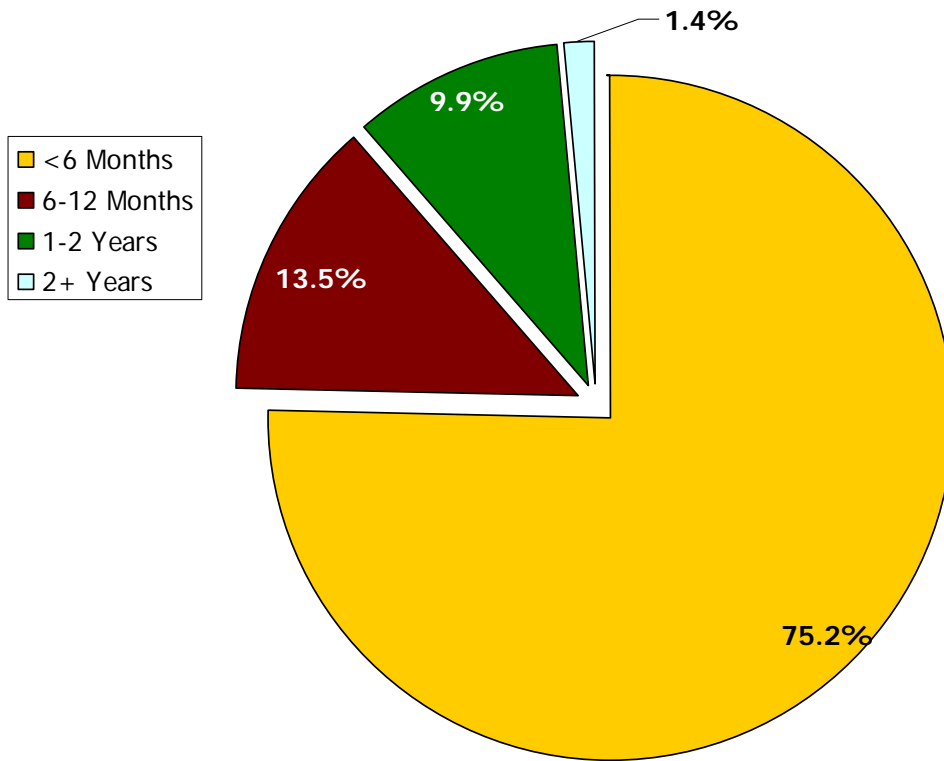


Transplants Facilitated by Year

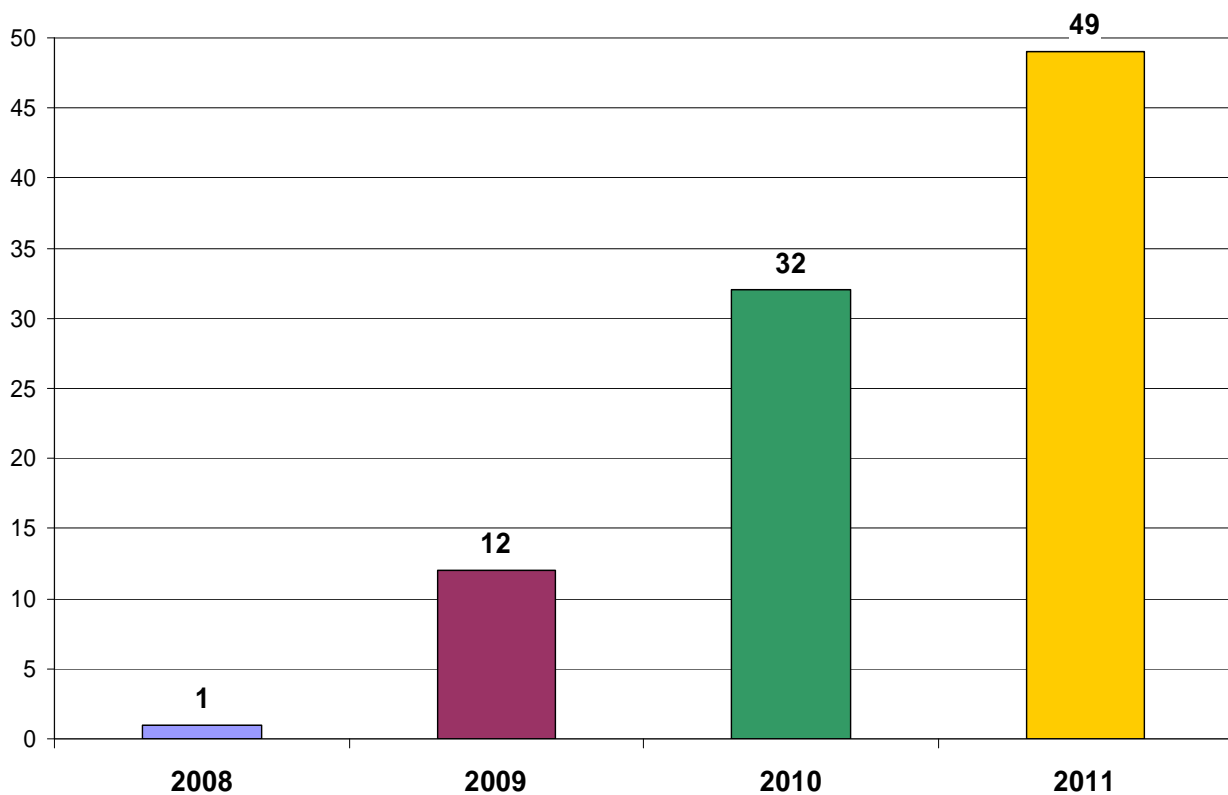


2011 Transplants by Wait Time

89% of transplanted patients waited < 12 months

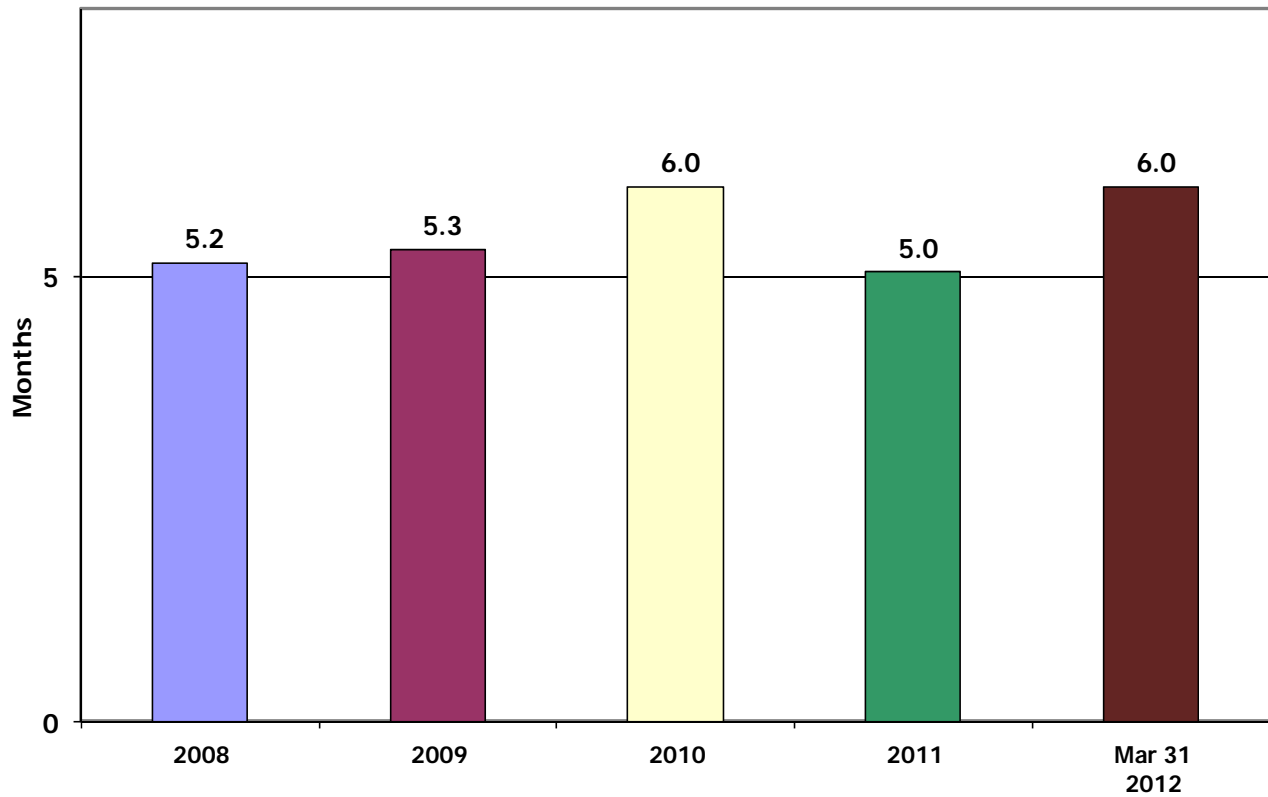


Number of Transplanted Patients with cPRA >80%



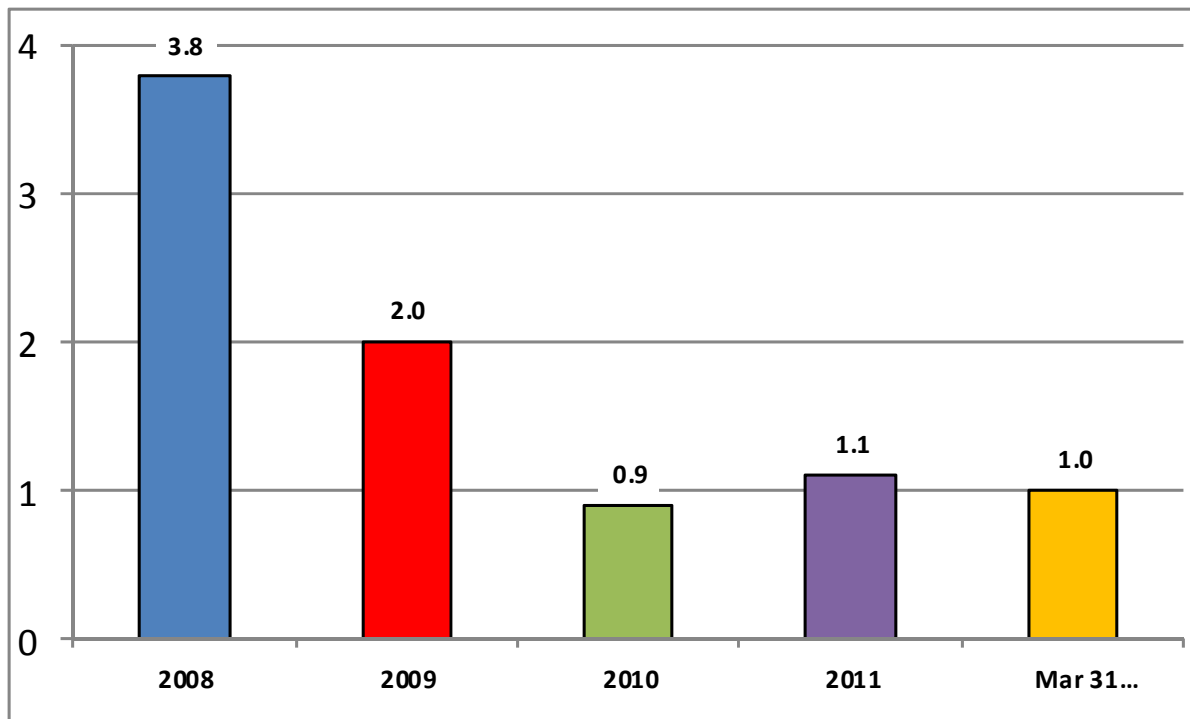
Transplanted Patient Average Wait Time

The average of the actual wait times of patients transplanted during the year
(wait time = transplant date - enrollment date)



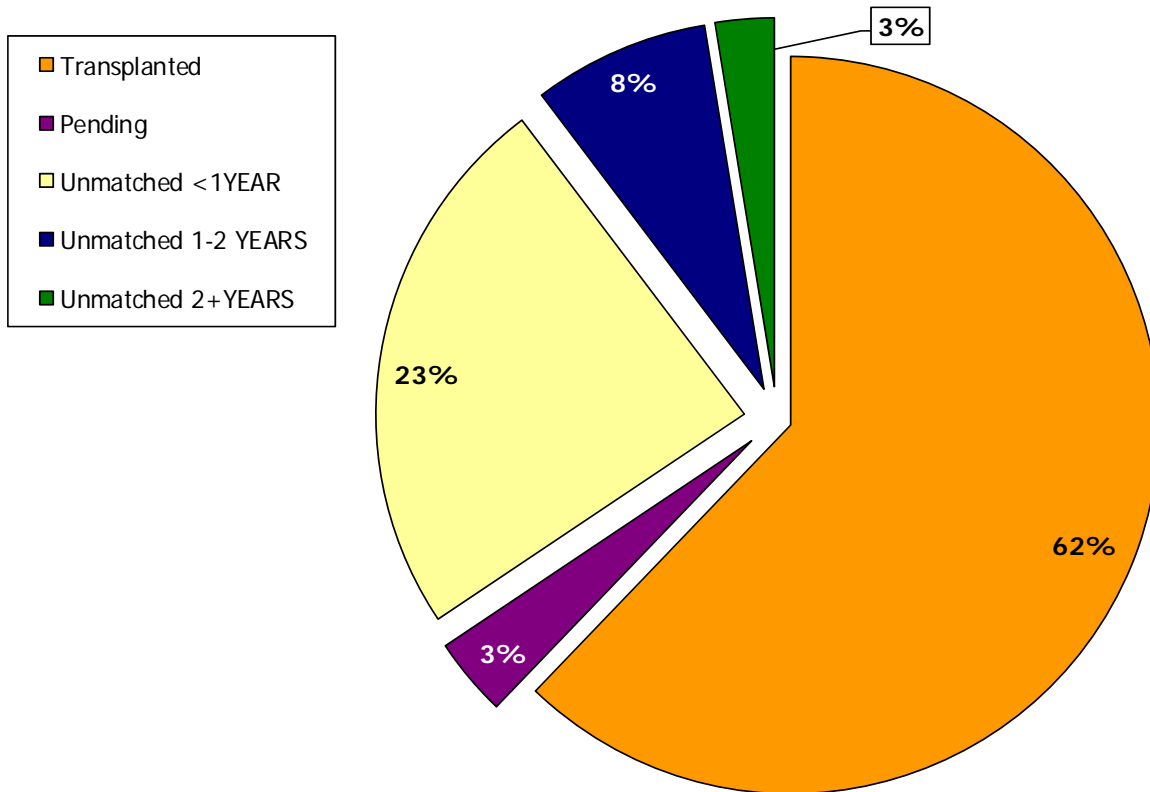
Enrolled Patient Average Wait Time

Ending unmatched patient pool/annual transplant run rate



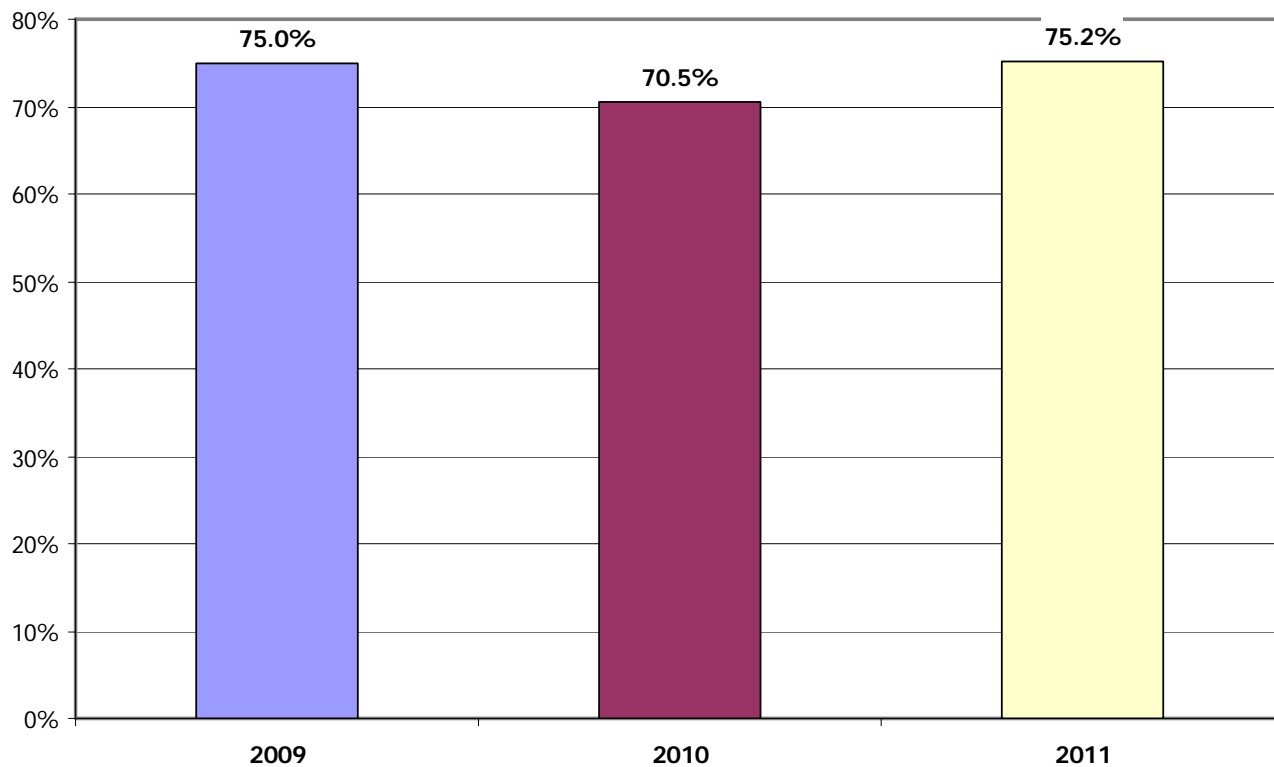
Cumulative Pool Distribution by Status

As of 3/31/2012

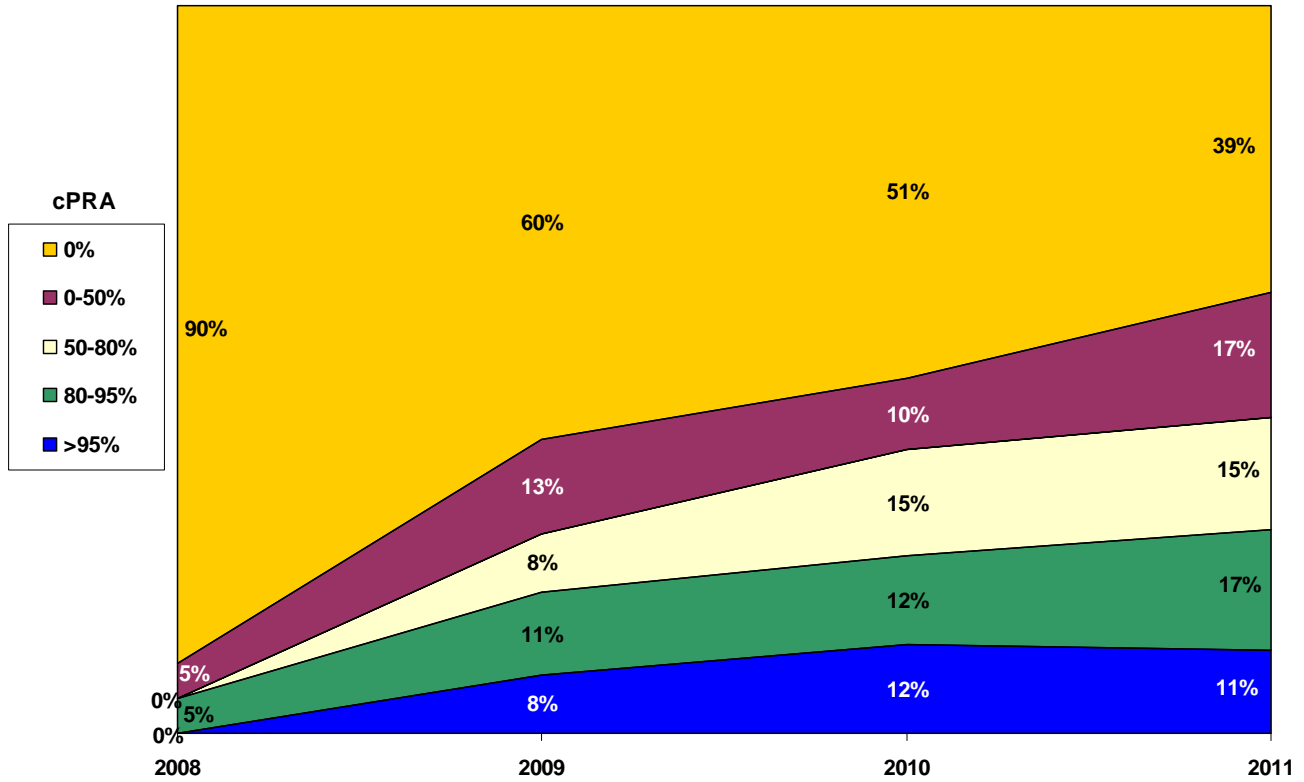


Percent of Patients Transplanted in < 6 Months

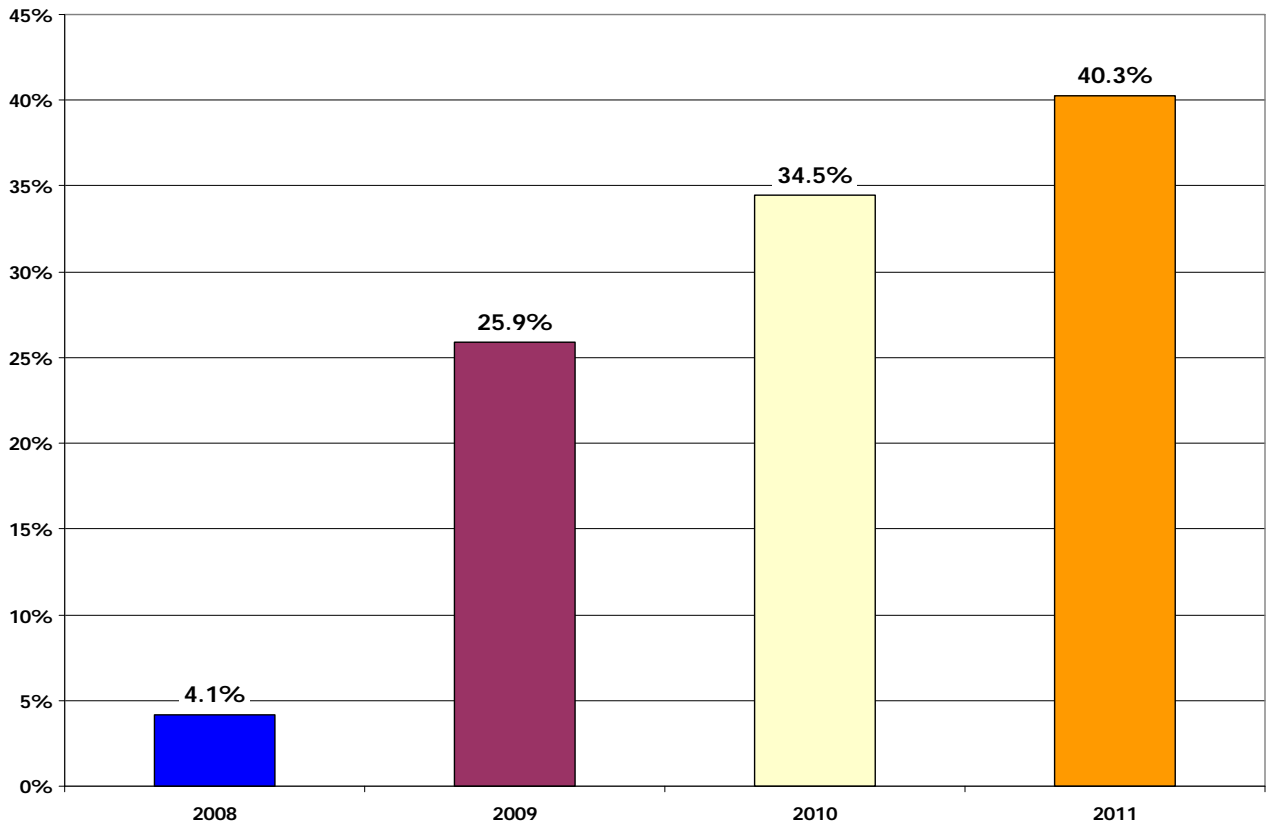
Number of transplants facilitated in < 6 months / Total transplants for same year



Transplanted Patients by Year by cPRA

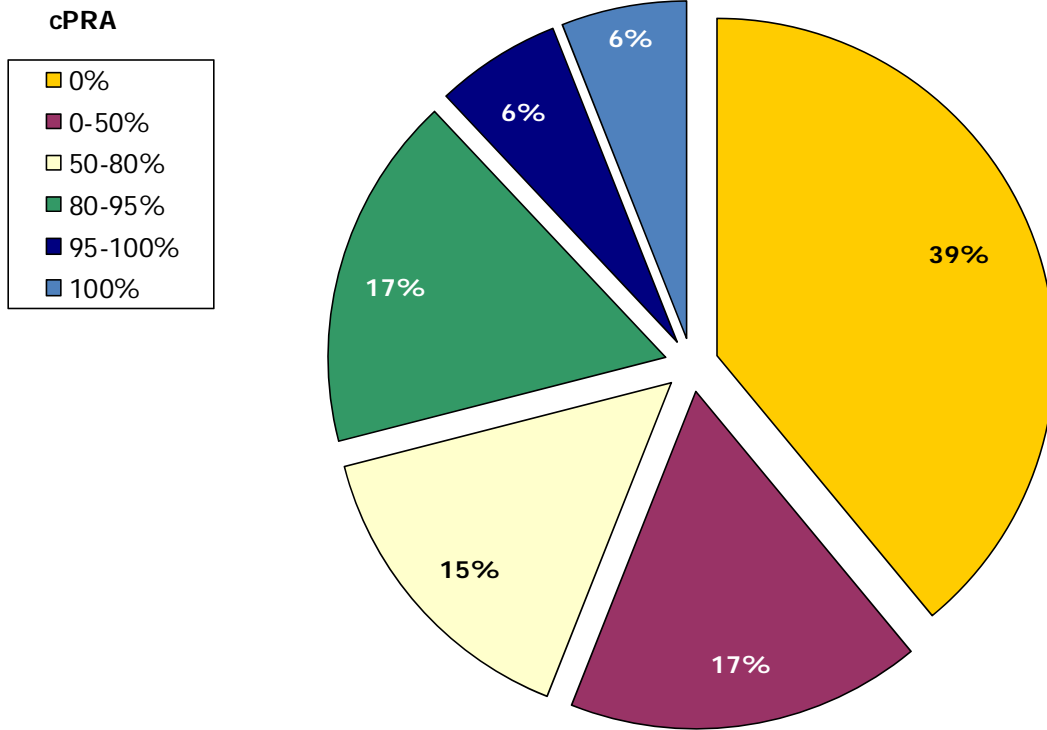


Average cPRA of Transplanted Patients by Year



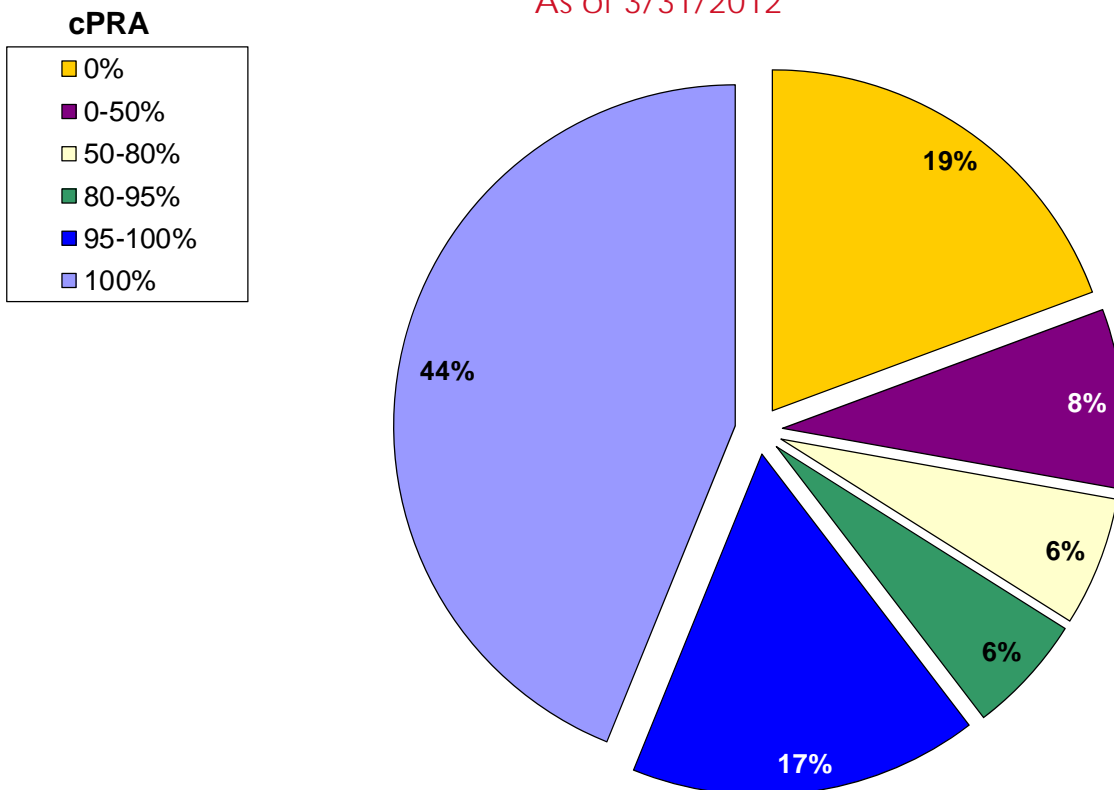
Transplants by cPRA

28% of transplanted patients >80% cPRA



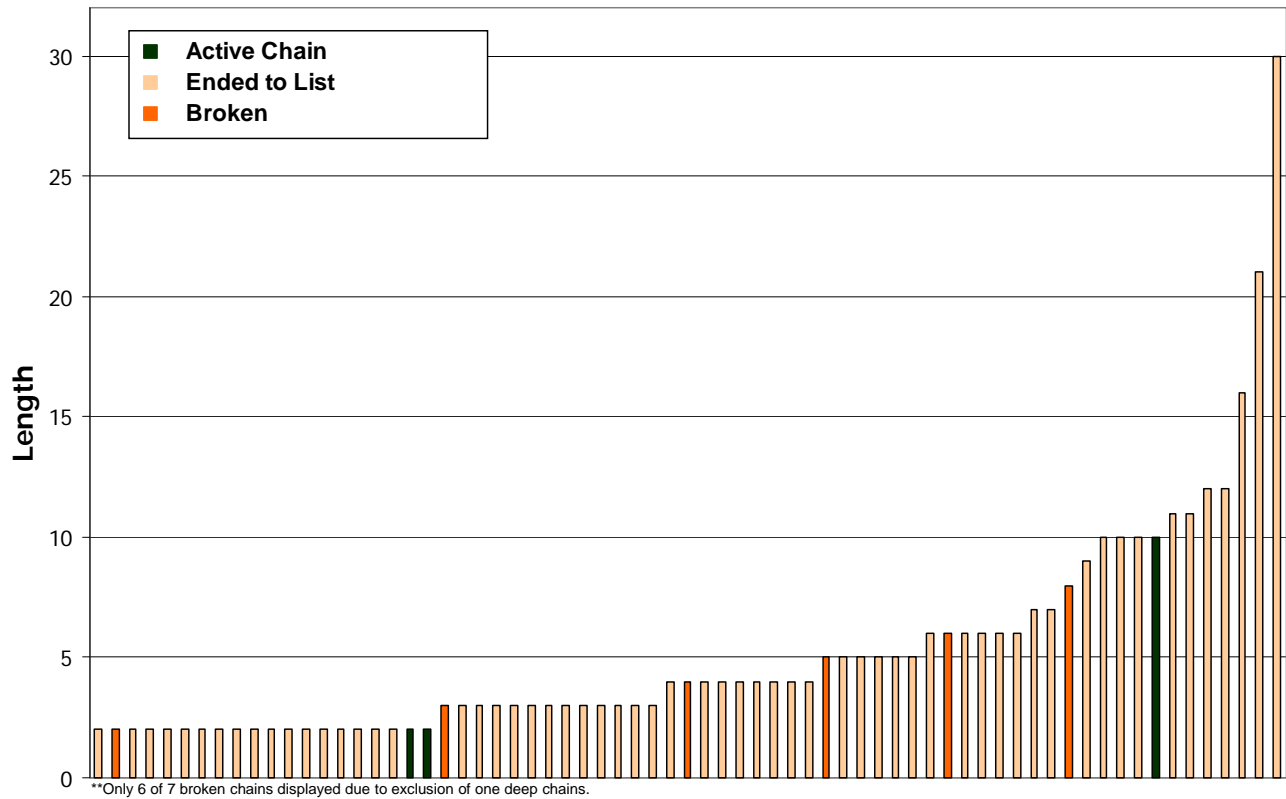
Pool Composition by cPRA

As of 3/31/2012



Chain Lengths

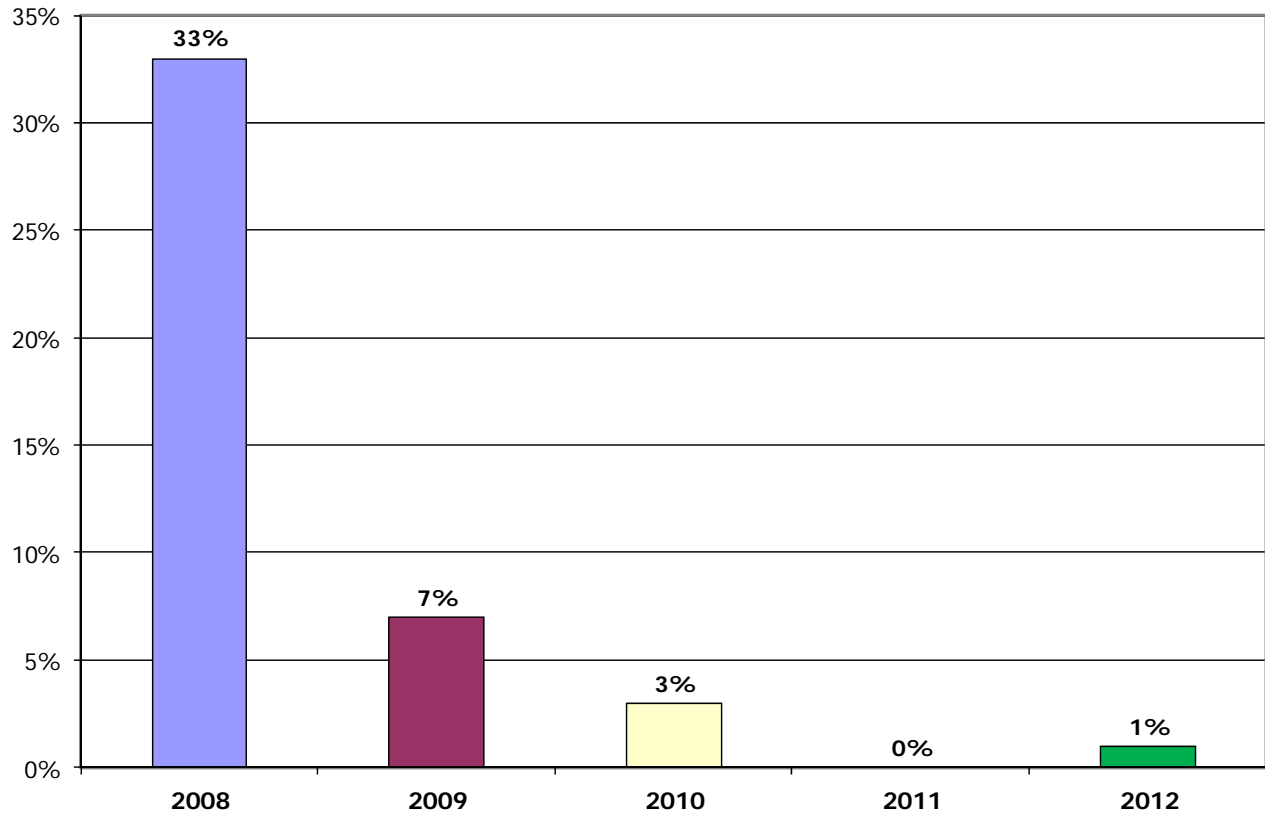
For Chains Greater Than 1 Deep



Summary of Broken Chains

<i>Reason Given</i>	<i>Center</i>	<i>Date</i>
Job Issues/ long wait time/ many failed XMs	Cornell	5/1/2008
No Reason	Cornell	8/21/2008
No Reason	CPMC	11/19/2008
Two cancelled swaps/ long wait time	UTMC	6/9/2009
Medical	UCSF	11/10/2009
Medical	UCLA	3/16/2010
Second nuclear GFR test < 80 (79 down fm 82)	AGH	9/16/2010
No Reason	MethodistTX	2/3/2012

Broken Chains by Year - Summary



Broken Chains by Year - Detail

Year	# Bridge Donors	# Broken Chains	% Broken Per Year
2008	9	3	33%
2009	29	2	7%
2010	61	2	3%
2011	75	0	0%
2012 (Est.)	100	1	1%
Total Bridge Donors	274	8	

NKR Program Statistics

		2008	2009	2010	2011	Mar 31 2012
1	Transplants Facilitated	21	62	131	175	45
2	Ending Unmatched Patient Pool	80	127	120	201	212
3	Cumulative Transplants	21	83	214	389	434
4	Cumulative Patient Pool	101	210	334	590	646
5	Percent of Pool Transplanted	21%	40%	64%	66%	67%
6	Enrolled Patient Average Wait Time	3.8	2.0	0.9	1.1	1.0
7	Transplanted Patient Average Wait Time	5.1	5.3	6.0	5.0	6.0
8	Average cPRA of Transplanted Patients	4.1%	25.9%	34.5%	40.3%	37.9%
9	Number of Transplants Completed by cPRA					
10	100%	0	1	4	10	0
11	95-100%	0	4	12	10	6
12	80-95%	1	7	16	29	4
13	50-80%	0	5	19	27	9
13	0-50%	1	8	13	30	7
14	0%	19	37	67	69	19
15	Sub-total	21	62	131	175	45
16	Percent of Transplants Completed by cPRA					
17	100%	0%	2%	3%	6%	0%
18	95-100%	0%	6%	9%	6%	13%
19	80-95%	5%	11%	12%	17%	9%
20	50-80%	0%	8%	15%	15%	20%
21	0-50%	5%	13%	10%	17%	16%
22	0%	90%	60%	51%	39%	42%
23	Sub-total	100%	100%	100%	100%	100%
24	Number of Transplanted Patients with cPRA >80%	1	12	32	49	10
25	Percent of Transplanted Patients with cPRA >80%	5%	19%	24%	28%	22%
26	Number of Unmatched Patients by cPRA (3/31/2012)					
27	100%					93
28	95-99%					35
29	80-95%					12
30	50-80%					13
31	0-50%					18
32	0%					41
33	Sub-total					212
34	Percent of Unmatched Patients by cPRA (3/31/2012)					
35	100%					44%
36	95-99%					17%
37	80-95%					6%
38	50-80%					6%
39	0-50%					8%
40	0%					19%
41	Sub-total					100%
42	Number of Transplants Completed by Wait Time					
43	< 6 months	21	42	74	106	25
44	6-12 months	0	10	14	19	6
45	1-2 years	0	4	15	14	4
46	2+ years	0	0	2	2	0
47	Sub-total	21	56	105	141	35
48	Percent of Transplants Completed by Wait Time					
49	< 6 months	100.0%	75.0%	70.5%	75.2%	71.4%
50	6-12 months	0.0%	17.9%	13.3%	13.5%	17.1%
51	1-2 years	0.0%	7.1%	14.3%	9.9%	11.4%
53	2+ years	0.0%	0.0%	1.9%	1.4%	0.0%
54	Sub-total	100%	100%	100%	100%	100%
55	Total Chains Started	3	8	28	38	7
56	Total Loops Completed	0	3	2	3	2
57	Number of broken chains	3	2	2	0	1
58	Bridge donors held (2012 is estimated)	9	29	61	75	100
59	Percent of broken chains	33%	7%	3%	0%	1%

Medical Board

Yolanda Becker, MD
Chicago, IL

Professor of Surgery
Director, Kidney and Pancreas Program
University of Chicago

Michael Cecka, PhD
Los Angeles, CA

NKR Immunogenetics Director
Professor, Department of Pathology at UCLA
Director of Clinical Research, UCLA Immunogenetics Center
Chair NKR Histocompatibility Committee

Marian Charlton, RN
New York, NY

Chief Transplant Coordinator
New York Presbyterian Hospital/Cornell University Medical Center
Chair NKR Operations Committee

Gabriel Danovitch, MD
Los Angeles, CA

Medical Director UCLA Kidney & Pancreas Program
Ronald Reagan UCLA Medical Center
Professor, David Geffen School of Medicine at UCLA

Michael Dattoli, MD
Sarasota, FL

Founder & Physician-in-Chief
Dattoli Cancer Center & Brachytherapy Research Institute

Connie Davis, MD
Seattle, WA

NKR Medical/Governmental Policy Advisor
Professor of Medicine, University of Washington
Medical Director Kidney & Pancreas Transplant Programs

Howard Gebel, PhD
Atlanta, GA

Professor Department of Pathology
Co-Director, Histocompatibility and Molecular Immunogenetics Lab
Emory University Hospital

Pam Heckathorn Hale
Los Angeles, CA

Kidney Transplant Recipient
Public Member

Valerie Johnson, MD, PhD
New York, NY

Chief, Division of Pediatric Nephrology
New York Presbyterian Hospital/Cornell University Medical Center
Associate Professor of Clinical Pediatrics Cornell University

Sandip Kapur, MD
New York, NY

Chief Transplantation, Surgical Director Kidney & Pancreas Program
New York Presbyterian Hospital/Cornell University Medical Center
Associate Professor of Surgery Cornell University

Steven Katznelson, MD
San Francisco, CA

Medical Director, Kidney & Pancreas Transplant Programs
Vice Chairman, Barry Levin Department of Transplantation
California Pacific Medical Center

Debbie Mast,
Palo Alto, CA

Database Administrator/Financial Manager
Solid Organ Transplant/VAD Program
Stanford Hospital and Clinics

Medical Board

Suzanne McGuire, RN
Los Angeles, CA

High Risk & Living Donor Exchange Transplant Coordinator
Kidney and Pancreas Transplant Program
Ronald Reagan UCLA Medical Center

Marc Melcher, MD, PhD
Palo Alto, CA

Chair, NKR Research Committee
Assistant Professor of Surgery
Stanford University Medical Center
Lucile Packard Children's Hospital

John Milner, MD
Chicago, IL

Associate Professor of Surgery Loyola
Director of Living Donor and Chain/Paired Exchange Transplantation
Loyola University Medical Center

Marie Morgjievich, APN
Livingston, NJ

Transplant Nurse Practitioner, Living Donor Institute
Saint Barnabas Medical Center

John Roberts, MD
San Francisco, CA

Chief of the UCSF Transplant Service
Professor of Surgery at UCSF

Sally Satel, MD
Washington, DC

Resident Scholar, American Enterprise Institute
Lecturer, Yale University School of Medicine
Psychiatrist, Oasis Drug Treatment Clinic & Kidney Recipient

David Serur, MD
New York, NY

NKR Medical Director
Medical Director, Kidney & Pancreas Transplant, Rogosin
Associate Professor Medicine & Surgery Cornell University
Attending Physician & Surgeon New York Presbyterian Hospital

Helen Spicer, RN
Richmond, VA

Director, Kidney Transplant Services
Virginia Transplant Center
Henrico Doctors' Hospital

Angela Stimpson,
Schenectady, NY

Good Samaritan Donor
Public Member

Barry Straube, MD
Washington, DC

Nephrologist & Transplant Physician
Former Chief Medical Officer Centers for Medicare & Medicaid

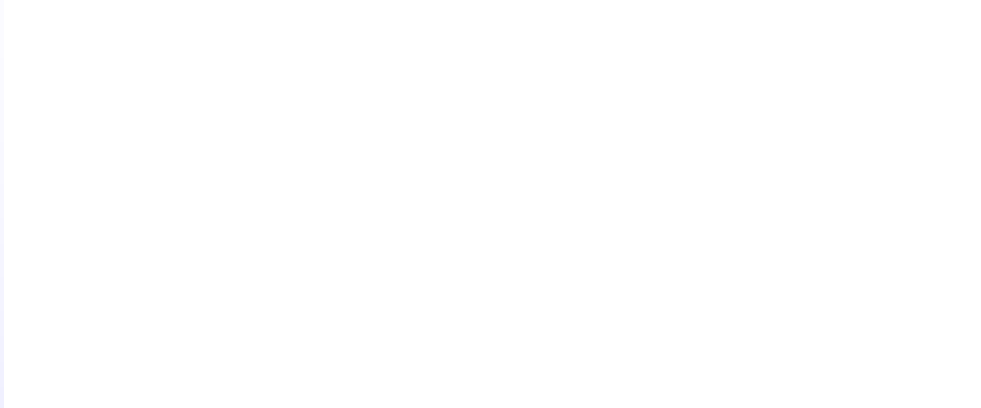
Jeffrey Veale, MD
Los Angeles, CA

Director Donor Exchange Program & Surgeon
Ronald Reagan UCLA Medical Center
Assistant Professor, David Geffen School of Medicine at UCLA



NATIONAL KIDNEY REGISTRY
FACILITATING LIVING DONOR TRANSPLANTS

P.O. Box 460 • Babylon • NY 11702-0460



www.kidneyregistry.org

800-936-1627